

PRODUCT

- Enamelled Aluminium Winding Wires
- Enamelled Copper Winding Wires

RANGE OF SIZES

Minimum 0.1 mm to maximum 4.0 mm

CLASS OF INSULATION

- Polyester - class 130
- Modified Polyester - class 155
- Polyesterimide - class 180
- Polyesterimide + amideimide/DC - class 200
- Self solderable - class 155
- Self solderable - class 180

PACKING DETAILS

- Taper spools- PT 10 to PT 180
- Parallel spools- as per DIN standards

APPLICATIONS

- Transformers » Motors » Appliances » Fans
- Automotive » Electronics » Switchgears » Compressors



DELIVERY SPOOLS

Sterling Wires are supplied on plastic Taper Barrelled as per the customers demand.

Taper Barrelled Spools (PT Series)

| Dimensions (mm) | | | | | | | | |
|-----------------|-----|-----|-----|-----|----|-----|-----|--------------------------------|
| Spool Type | d1 | d3 | d2 | d4 | d5 | I2 | I1 | Aluminium Net Weight Max (Kg.) |
| PT-15 | 200 | 180 | 108 | 95 | 30 | 200 | 227 | 6 |
| PT-20 | 225 | 210 | 150 | 132 | 32 | 248 | 278 | 10 |
| PT-25 | 225 | 210 | 128 | 108 | 32 | 248 | 278 | 12 |
| PT-35 | 252 | 235 | 128 | 108 | 15 | 270 | 300 | 16 |

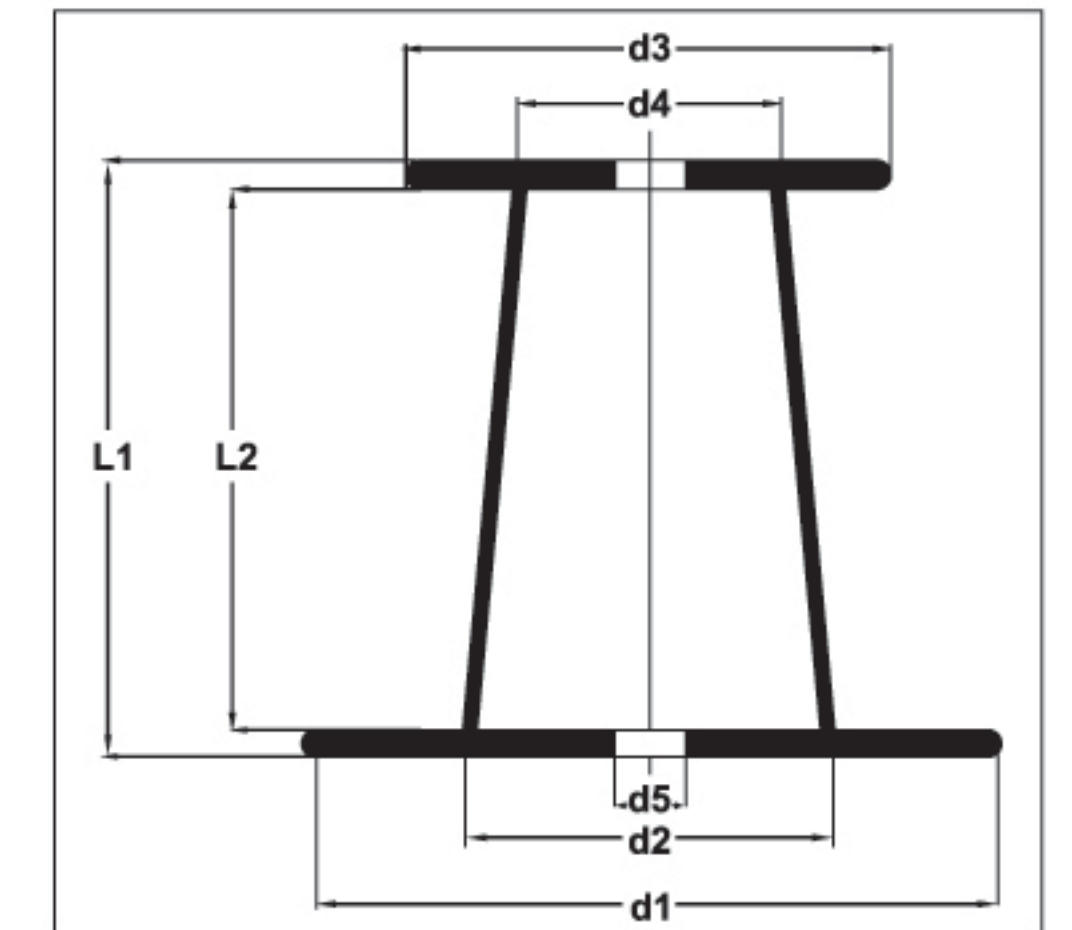


Figure 1: PT Spool

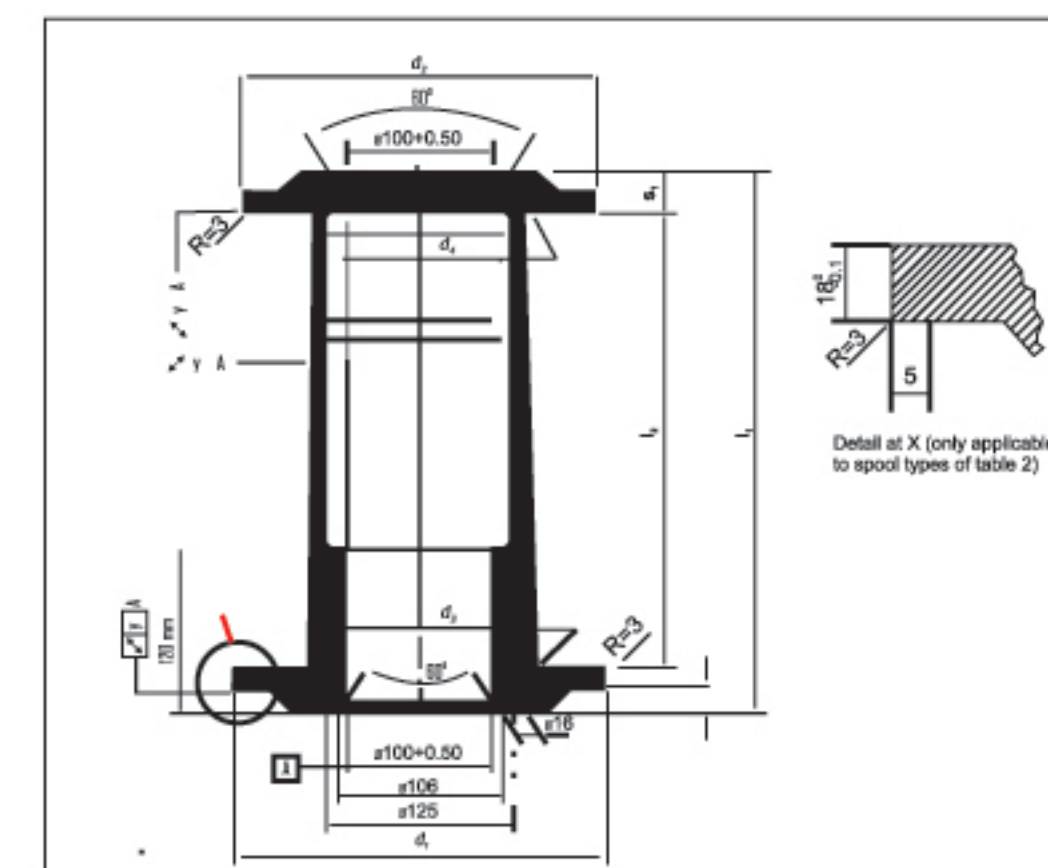


Figure 2: Taper Barrelled Spools

Taper Barrelled Spools (Returnable)

| Dimensions (mm) | | | | | |
|-----------------|-----|-----|---------|---------|----------------------------|
| Spool Type | d1 | d2 | I1 Max. | I2 Nom. | Aluminium Net Weight (kg.) |
| 250/400 | 250 | 160 | 400 | 335 | 15 |
| 315/500 | 315 | 200 | 500 | 425 | 30 |
| 400/630 | 400 | 250 | 630 | 530 | 60 |

Note - Dimensions above are indicative and only for reference.

Other Spools available on request.

Why STERLING Aluminum ENAMELLED Wires?

- ⇒ Experience of more than 15 years in aluminium winding wires with the largest manufacturing set up in India.
- ⇒ Input is extra soft special grade aluminium wire rods.
- ⇒ Enamels used are made specifically for aluminium wires application unlike industry practise to use same enamel for copper and aluminium wires.
- ⇒ Our wires have almost NIL Pinholes, Higher Breakdown voltage and cut through temperatures.
- ⇒ Wires have extra softness and higher elongation resulting in easy workability.
- ⇒ Wires run at higher winding speeds upto 4200 RPM on winding machines.
- ⇒ Increased productivity, cost savings and a reliable product **quality to last for life.**
- ⇒ The large set up gives capability of delivering quantity across sizes at the same time.
- ⇒ We also do custom made sizes, specifications and packing.

PACKAGING

